

GARDENERS

SUPPLY COMPANY

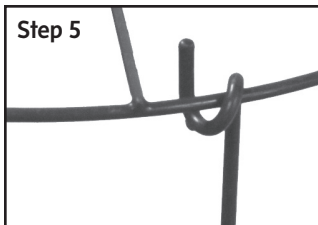
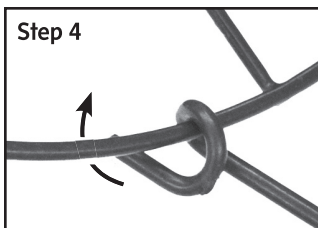
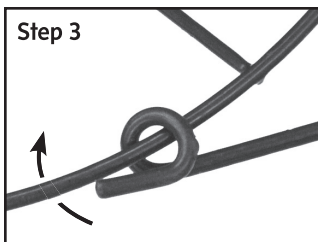
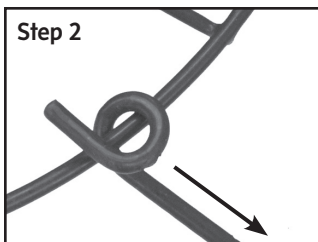
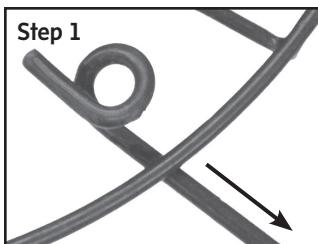
Grow Through Supports

Install Grow Through Supports early in the growing season and watch plants grow up through them. As plants grow, their foliage hides the dark green supports.

To attach the legs to the top, follow the diagrams at right. Space three legs around the outside ring of each top. Push legs about 4" to 6" into the ground, centering the top over the plant.

Maintenance

To prolong the life of your Grow Through Supports, we recommend storing them under cover at the end of the season. If the vinyl coating is nicked, you may wish to touch it up with exterior paint or polyurethane to prevent the solid steel supports from rusting.



Phone Orders: 1-800-427-3363 • Customer Service: 1-800-876-5520
e-mail: info@gardeners.com • Web: www.gardeners.com