

Deep Root Raised Bed - 4' x 6'



812-260-2128 | gardeners.com
service@gardeners.com

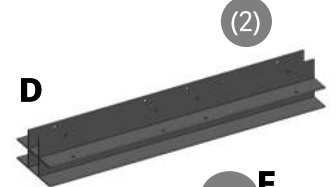
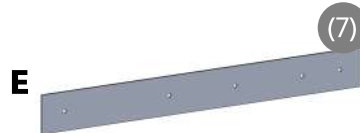
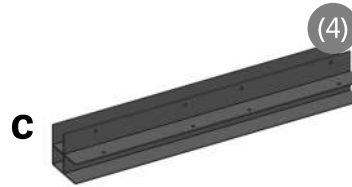
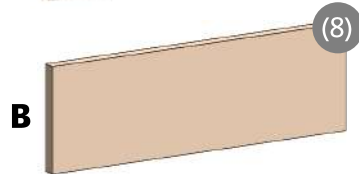
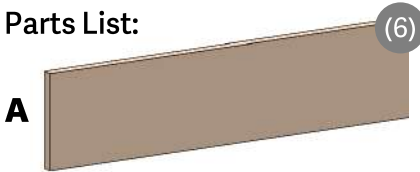
Tools Required:

Drill or Driver
with Phillips bit



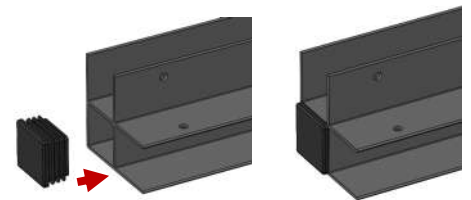
Two people recommended for assembly

Parts List:

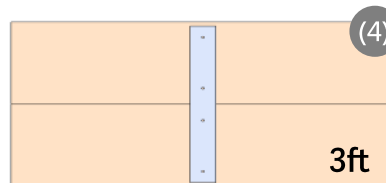
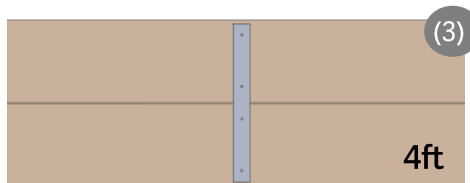


1. Locate a level area and prepare the ground for planting. If installing on lawn, remove sod and loosen soil to a depth of 6".

2. Press a cap (G) into the top of each leg (C) and (D) using a mallet if necessary.



3. Working on a flat surface, align the short ends of two long boards (A) with the rough face up. Place one flat stock (E) at the center as shown below. Make sure boards (A) are flush and tight and secure the flat stock (E) with screws (F). Repeat twice more for the longer 4ft panels and four times using the shorter 3ft boards (B) for a total of 7 panels: three 4ft panels and four 3ft panels.



4. Slide an aluminum leg (C) over each end of two longer 4ft panels. Ensure the leg (C) is tight against the board and secure with screws (F).

5. The inline connectors (D) are located in the middle as shown at right and connect two 3ft panels on either side and one 4ft panel in the middle.

