

Deep Root Raised Bed - 4' x 12'



812-260-2128 | gardeners.com

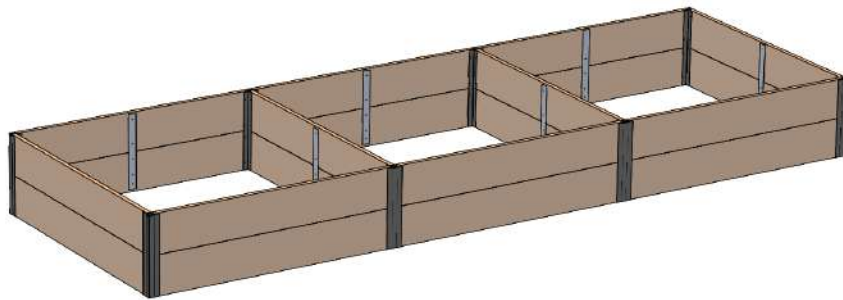
service@gardeners.com

Tools Required:

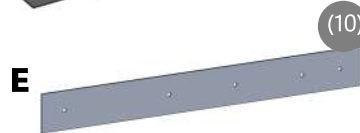
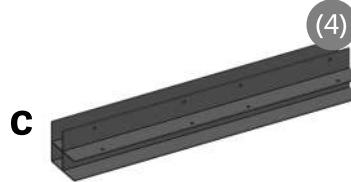
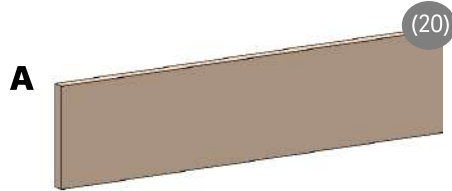
Drill or Driver
with Phillips bit



Two people recommended for assembly

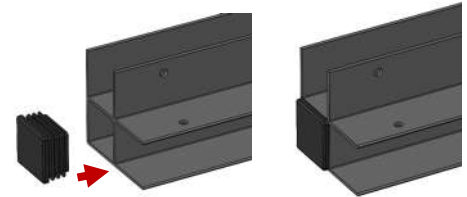


Parts List:

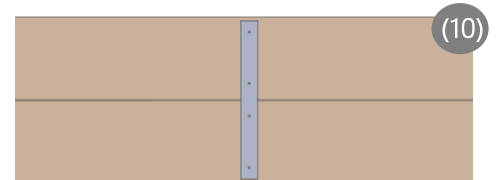


1. Locate a level area and prepare the ground for planting. If installing on lawn, remove sod and loosen soil to a depth of 6".

2. Press a cap (G) into the top of each leg (C) and (D) using a mallet if necessary.



3. Working on a flat surface, align the short ends of two boards (A) with the rough face up. Place one flat stock (E) at the center as shown to the right. Make sure boards (A) are flush and tight and secure the flat stock (E) with screws (F). Repeat for a total of 10 panels.



4. Slide an aluminum corner (C) over each end of two panels. Ensure the corner (C) is tight against the board and secure with screws (F). These are the end panels shown below on the far left and far right.

5. The inline connectors (D) are located in the middle as shown below and connect two panels on either side and one panel in the middle. Ensure the connectors (D) are tight against the boards and secure with screws (F).

