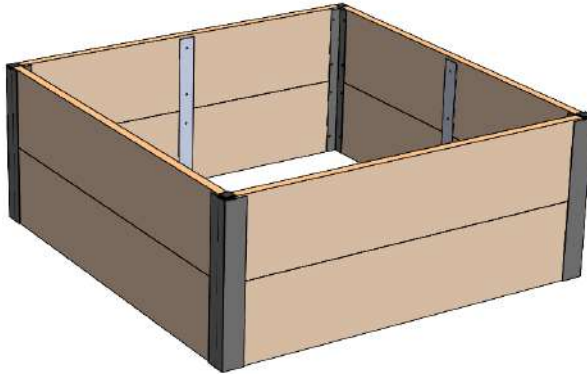


Deep Root Raised Bed - 2', 3' & 4' Square



812-260-2128 | gardeners.com
service@gardeners.com



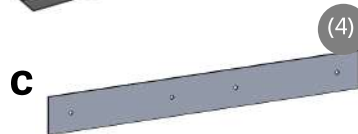
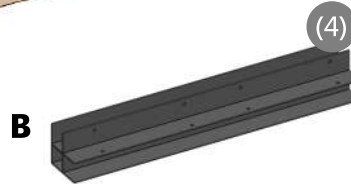
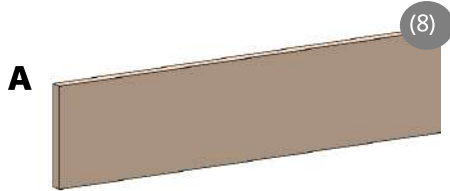
Tools Required:

Drill or Driver
with Phillips bit



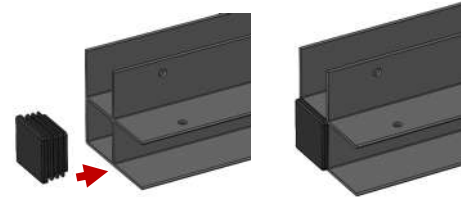
Two people recommended for assembly

Parts List:

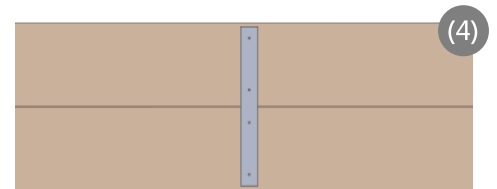


1. Locate a level area and prepare the ground for planting. If installing on lawn, remove sod and loosen soil to a depth of 6".

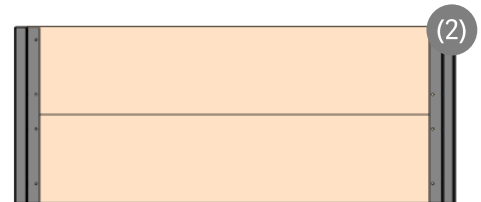
2. Press a cap (D) into the top of each leg (B) using a mallet if necessary.



3. Working on a flat surface, align the short ends of two boards (A) with the rough face up. Place one flat stock (C) at the center as shown to the right. Make sure boards (A) are flush and tight and secure the flat stock (C) with screws (E). Repeat for a total of 4 panels.



4. Slide an aluminum corner (B) over each end of two panels. Ensure the corner (B) is tight against the board and secure with screws (E).



5. Assemble the remaining panels as shown to the right. Ensure the corners (B) are tight against the boards and secure with screws (E).

